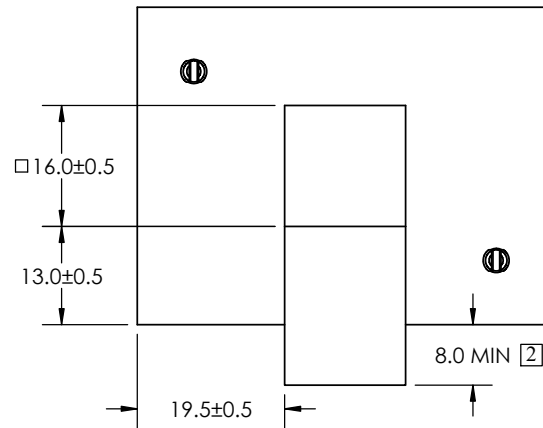
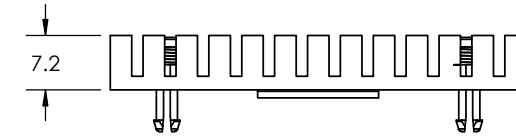
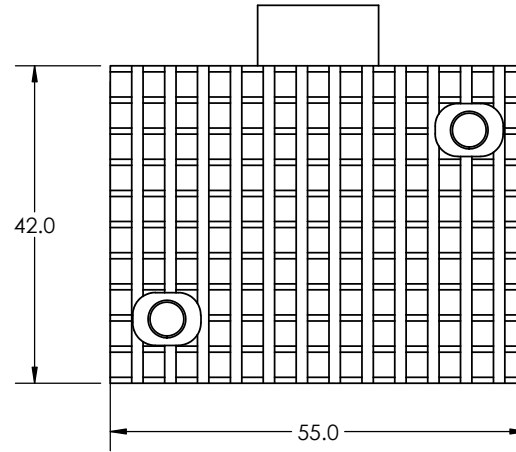
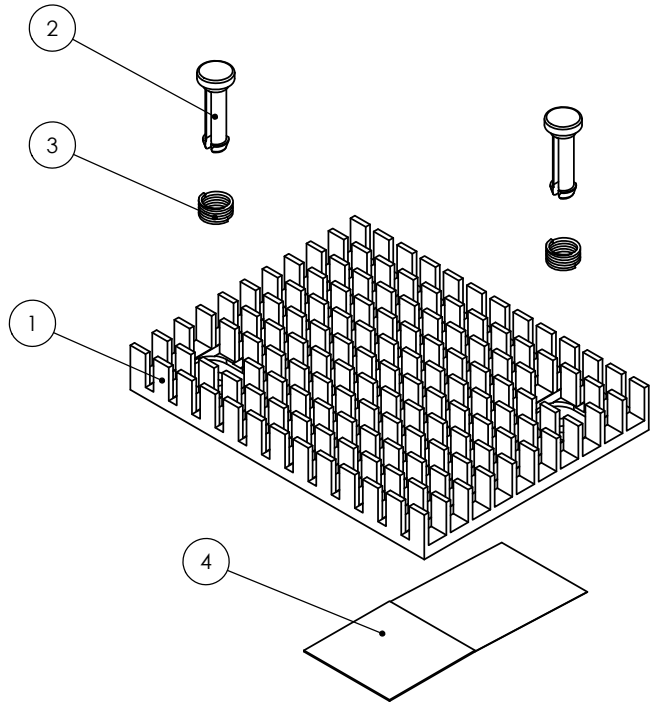


THE INFORMATION CONTAINED IN THIS DRAWING IS THE SOLE PROPERTY OF RADIAN HEATSINKS AND ANY REPRODUCTION IN PART OR IN WHOLE IS STRICTLY PROHIBITED WITHOUT THE WRITTEN PERMISSION OF RADIAN HEATSINKS.

REV	DESCRIPTION	APPROVED	DATE
A	INITIAL RELEASE	KP	4/16/2023

EXPLODED VIEW



NOTES: (UNLESS OTHERWISE SPECIFIED)

1. PART SHALL BE RoHS COMPLIANT

2. PULL TAB TO EXTEND 8 mm BEYOND HEATSINK EDGE IN THE DIRECTION SHOWN

ITEM NO.	PART NUMBER	DESCRIPTION	QTY.
1	PCI1137	CUSTOM HEAT SINK	1
2	HS8175	BRASS PUSH PIN	2
3	SP029	COMPRESSION SPRING	2
4	P9909	16X16mm CHOMERICS T725 PAD W/ PULL TAB	1

UNLESS OTHERWISE SPECIFIED
 DIMENSIONS ARE IN mm
 TOLERANCES ARE:
 1 PLACE DECIMALS: ± 0.25
 2 PLACE DECIMALS: ± 0.10
 ANGLES: ± 1°

THIRD ANGLE PROJECTION

APPROVALS	DATE
DRAWN LCAPILI	04/04/2023
CHECKED CTOLENTINO	04/12/2023
ENGINEER KPINHEIRO	04/04/2023



RADIAN HEATSINKS
 RADIAN THERMAL PRODUCTS, INC.
 2160 WALSH AVE
 SANTA CLARA, CA 95050

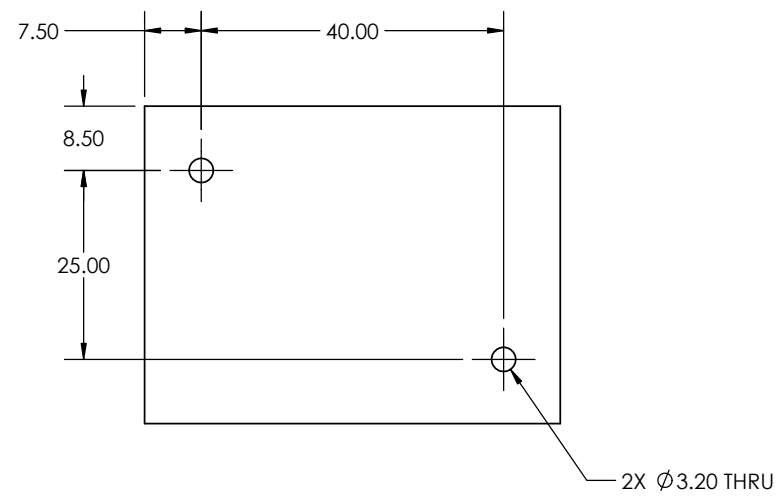
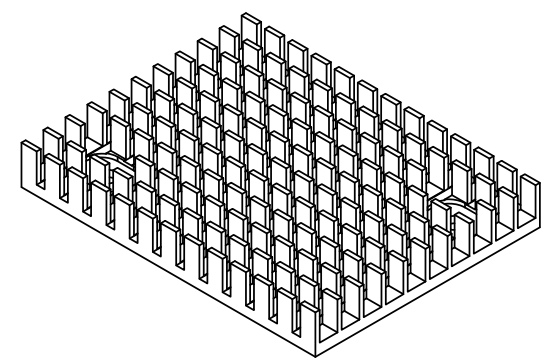
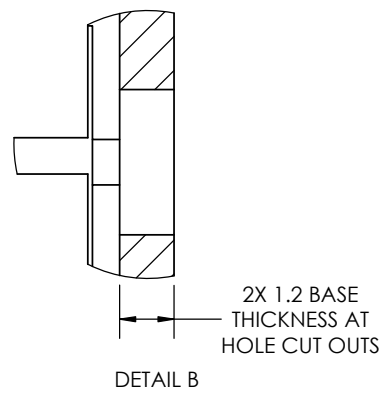
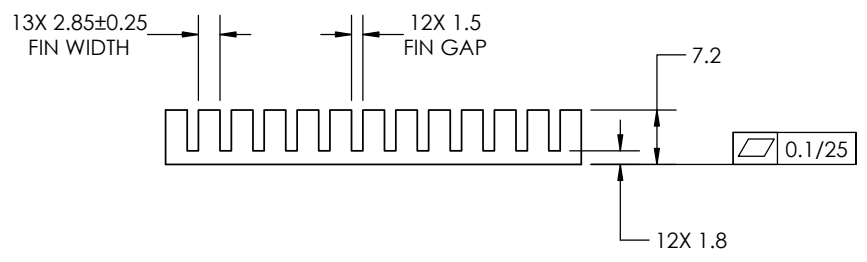
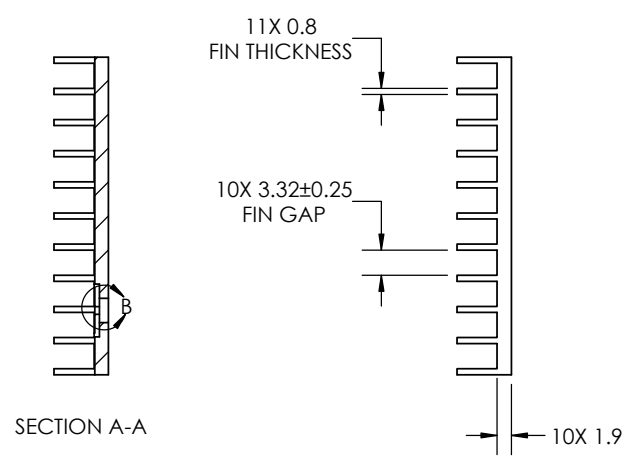
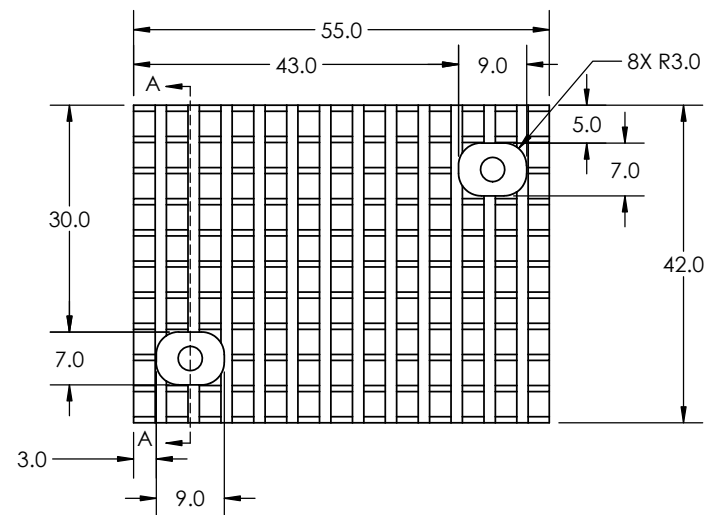
HEAT SINK ASSEMBLY

SIZE	DWG. NO.	REV.
A	PCI1138	A

SHEET 1 OF 1

THE INFORMATION CONTAINED IN THIS DRAWING IS THE SOLE PROPERTY OF RADIAN HEATSINKS AND ANY REPRODUCTION IN PART OR IN WHOLE IS STRICTLY PROHIBITED WITHOUT THE WRITTEN PERMISSION OF RADIAN HEATSINKS.

REV	DESCRIPTION	APPROVED	DATE
A	INITIAL RELEASE	KP	4/16/2023



- NOTES: (UNLESS OTHERWISE SPECIFIED)
- MATERIAL: AL6061/AL6063
 - PART CAN BE MADE FROM EMU138 EXTRUSION
 - FINISH: ANODIZE PER MIL-A-8625 TYII CL2 BLACK
 - MAX. RADIUS 0.4 mm IS ALLOWED AT FIN TIPS AND ROOTS
 - MAX DRAFT ANGLE 0.5° IS ALLOWED
 - PART SHALL BE FREE OF BURRS AND SHARP EDGES
 - PART SHALL BE RoHS COMPLIANT

MATERIAL	[1] [2]	APPROVALS	DATE
DRAWN	LCAPILI	CHECKED	04/11/2023
FINISH	[3]	CTOLENTINO	04/12/2023
UNLESS OTHERWISE SPECIFIED DIMENSIONS ARE IN mm TOLERANCES ARE: 1 PLACE DECIMALS: ± 0.25 2 PLACE DECIMALS: ± 0.10 ANGLES: ± 1°	ENGINEER	KPINHEIRO	04/11/2023
	THIRD ANGLE PROJECTION		

 RADIAN HEATSINKS RADIAN THERMAL PRODUCTS, INC. 2160 WALSH AVE SANTA CLARA, CA 95050	CUSTOM HEAT SINK	
	SIZE DWG. NO.	REV.
SHEET 1 OF 1		A
PC1137		1