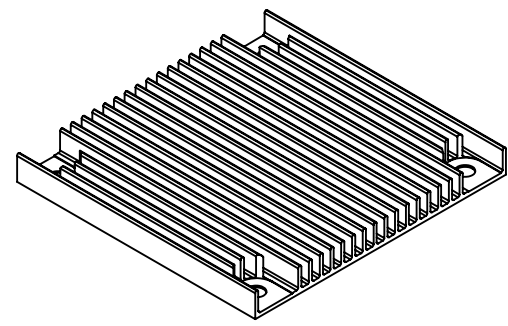
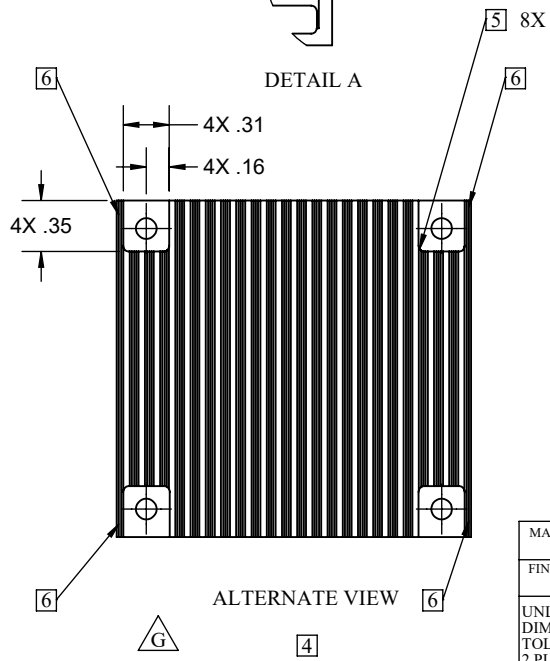
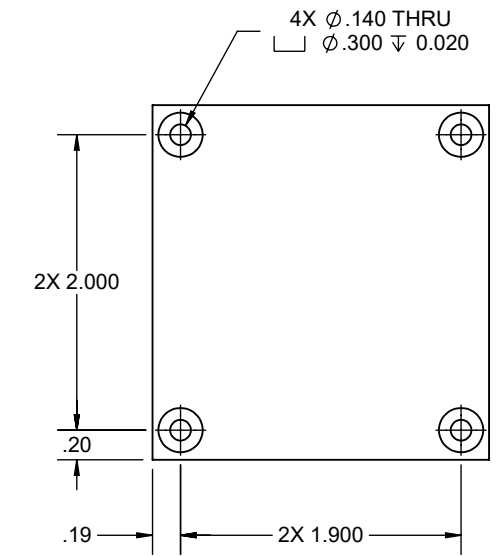
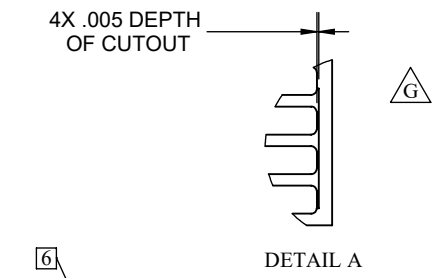
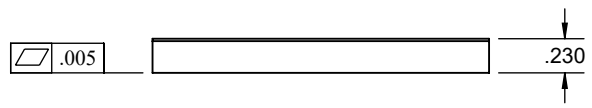
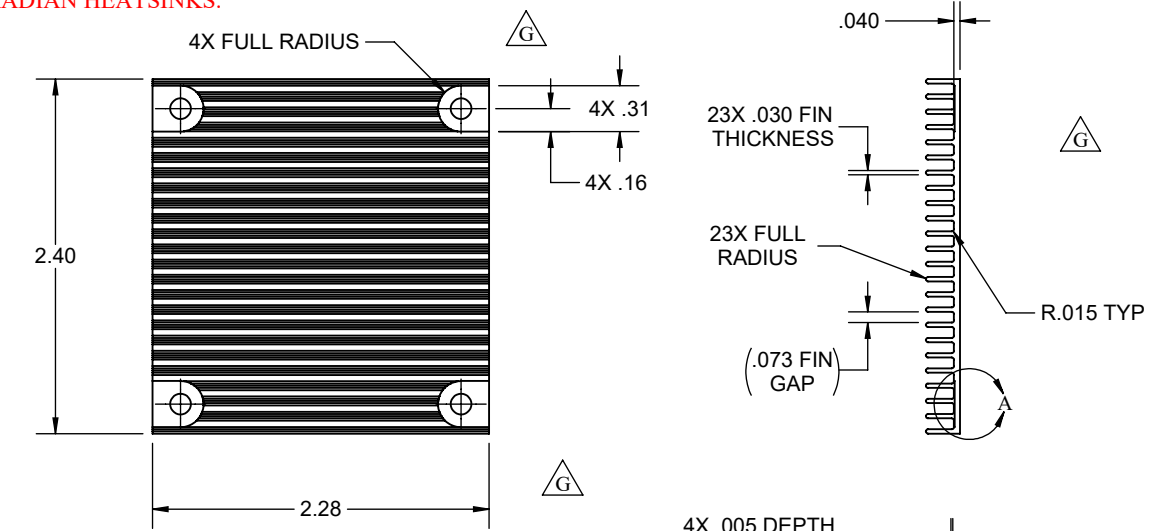


THE INFORMATION CONTAINED IN THIS DRAWING IS THE SOLE PROPERTY OF RADIAN HEATSINKS AND ANY REPRODUCTION IN PART OR IN WHOLE IS STRICTLY PROHIBITED WITHOUT THE WRITTEN PERMISSION OF RADIAN HEATSINKS.




REV	DESCRIPTION	DRAWN	APPROVED	DATE
A	INITIAL RELEASE	TL	TL	9/26/2000
B	CHANGED TOLERANCE ON LENGTH AND WIDTH	KA	KA	6/02/2003
C	CHANGED PART #. ADDED SURFACE FINISH TABLE	KA	KA	7/04/2003
D	CHANGED TOLERANCE	FW	FW	6/05/2007
E	ECN#911171: TOLERANCE CHANGE	FW	FW	11/17/2009
F	ECN#006301: ADDED COUNTERBORES AT BOTTOM	MH	MH	6/30/2010
G	ECN2105242: CHANGE TO DOCUMENT FORMAT, REMOVAL OF FINISH TABLE, INCLUSION OF ALTERNATE VIEW FOR SQUARE CUTOUTS AND REVISED NOTES.	JP	AV	5/24/2021

NOTES (UNLESS OTHERWISE SPECIFIED):

- 1 MATERIAL: ALUMINUM ALLOY 6063-T5.
- 2 ANODIZE PER MIL-A-8625 TYII CL2 BLACK.
3. MAX DRAFT ANGLE 0.5° IS ALLOWED.
- 4 HARDWARE CUTOUTS VARY IN STYLE AND MAY APPEAR AS SHOWN IN ALTERNATE VIEW.
- 5 RADIUS TO BE SELECTED AT MANUFACTURER'S OPTION. RADIUS DIMENSION SHALL NOT BE INSPECTED.
- 6 MACHINING INTO INDICATED FINS IS NOT PERMITTED.
7. PART TO BE FREE OF BURRS.
8. PART TO BE RoHS COMPLIANT.

MATERIAL	1	APPROVALS	DATE
FINISH	2	DRAWN	T LABARGE
UNLESS OTHERWISE SPECIFIED DIMENSIONS ARE IN INCHES TOLERANCES ARE: 2 PLACE DECIMALS: ± 0.010 3 PLACE DECIMALS: ± 0.005 ANGLES: ± 1°	THIRD ANGLE PROJECTION	CHECKED	9/23/2000
		AVALLE	5/24/2021
		ENGINEER	
		JPOLLARD	5/24/2021
SHEET 1 OF 1		SIZE	DWG. NO.

 RADIAN HEATSINKS RADIAN THERMAL PRODUCTS, INC. 2160 WALSH AVE SANTA CLARA, CA 95050	2.4 X 2.28 X .23" PLATE FIN HEATSINK		REV. G
	HS1579E		
	A		