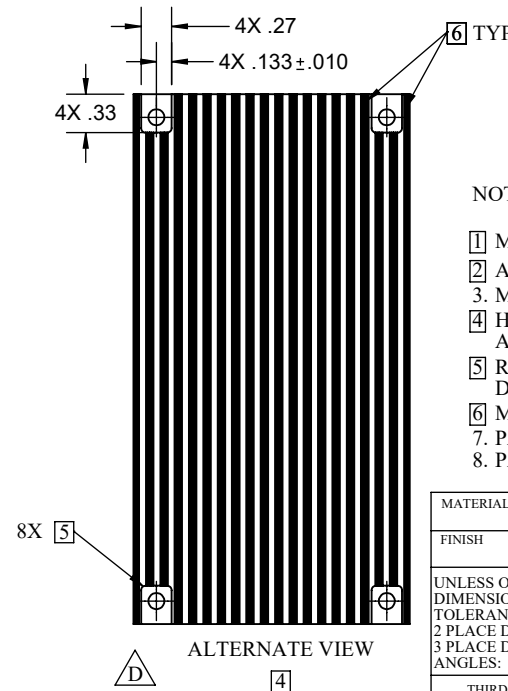
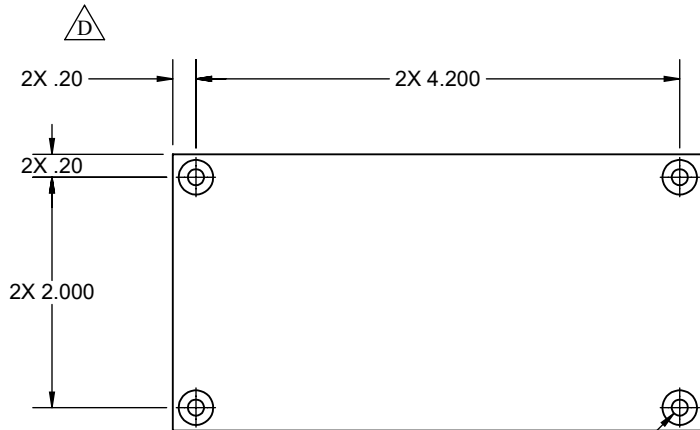
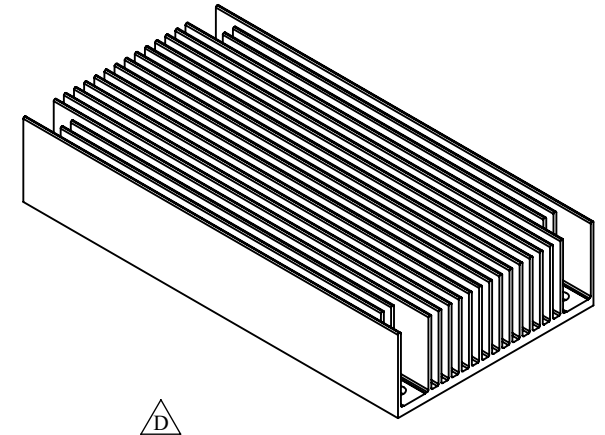
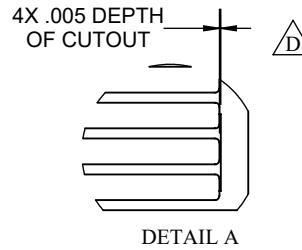
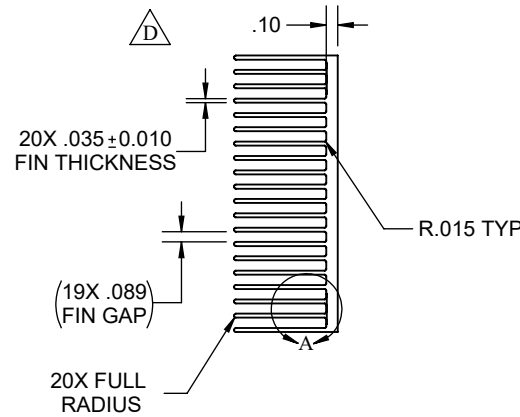
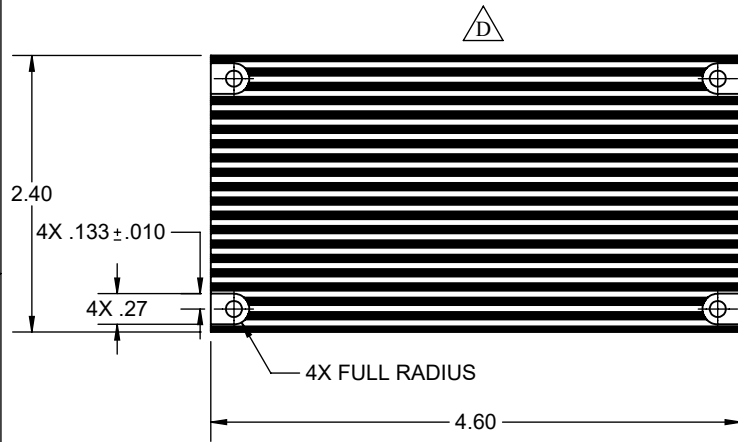


THE INFORMATION CONTAINED IN THIS DRAWING IS THE SOLE PROPERTY OF RADIAN HEATSINKS AND ANY REPRODUCTION IN PART OR IN WHOLE IS STRICTLY PROHIBITED WITHOUT THE WRITTEN PERMISSION OF RADIAN HEATSINKS.

REV	DESCRIPTION	DRAWN	APPROVED	DATE
A	INITIAL RELEASE	TL	TL	11/10/2000
B	CHANGED PART #. ADDED SURFACE FINISH TABLE	KA	KA	7/04/2003
C	PER ECN#706051	FW	FW	6/05/2007
D	ECN2104192: UPADATED DOCUMENT FORMAT, NOTES, REMOVED FINISH TABLE, AND INCLUDED ALTERNATIVE VIEW	JP	WR	4/29/2021



NOTES (UNLESS OTHERWISE SPECIFIED):

- [1] MATERIAL: ALUMINUM ALLOY 6063-T5.
- [2] ANODIZE PER MIL-A-8625 TYII CL2 BLACK.
- 3. MAX DRAFT ANGLE 0.5° IS ALLOWED.
- [4] HARDWARE CUTOUTS VARY IN STYLE AND MAY APPEAR AS SHOWN IN ALTERNATE VIEW.
- [5] RADIUS TO BE SELECTED AT MANUFACTURER'S OPTION. RADIUS DIMENSION SHALL NOT BE INSPECTED.
- [6] MACHINING INTO INDICATED FINIS IS NOT PERMITTED.
- 7. PART TO BE FREE OF BURRS.
- 8. PART TO BE RoHS COMPLIANT.

MATERIAL	[1]	APPROVALS	DATE
FINISH	[2]	DRAWN	11/10/2000
UNLESS OTHERWISE SPECIFIED DIMENSIONS ARE IN INCHES TOLERANCES ARE: 2 PLACE DECIMALS: ± 0.010 3 PLACE DECIMALS: ± 0.005 ANGLES: ± 1°		CHECKED	4/29/2021
		ENGINEER	
		DATE	4/14/2021
THIRD ANGLE PROJECTION		SHEET 1 OF 1	



RADIAN HEATSINKS
 RADIAN THERMAL PRODUCTS, INC.
 2160 WALSH AVE
 SANTA CLARA, CA 95050

4.60 X 2.40 X .90
DC/DC HEATSINK

SIZE	DWG. NO.	REV.
A	HS1594E	D