

THE INFORMATION CONTAINED IN THIS DRAWING IS THE SOLE PROPERTY OF RADIAN HEATSINKS AND ANY REPRODUCTION IN PART OR IN WHOLE IS STRICTLY PROHIBITED WITHOUT THE WRITTEN PERMISSION OF RADIAN HEATSINKS.

REV	DESCRIPTION	DRAWN	APPROVED	DATE
A	INITIAL RELEASE	MW	AG	10/02/2018

EXPLODED VIEW

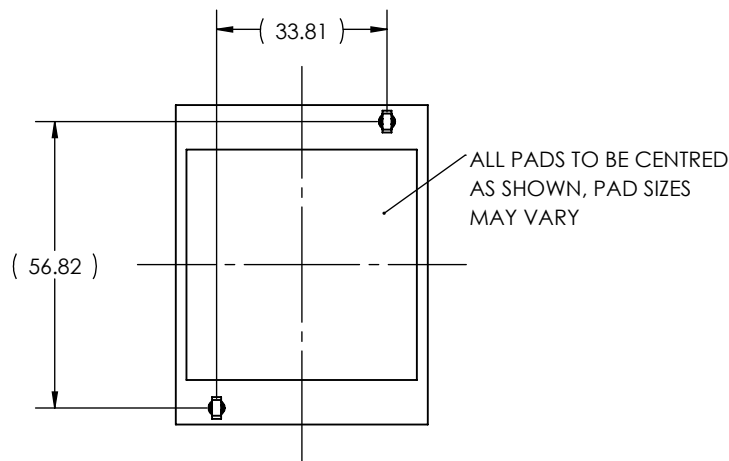
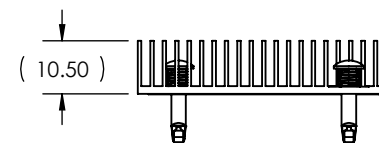
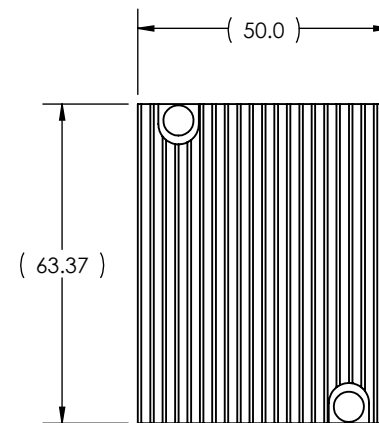
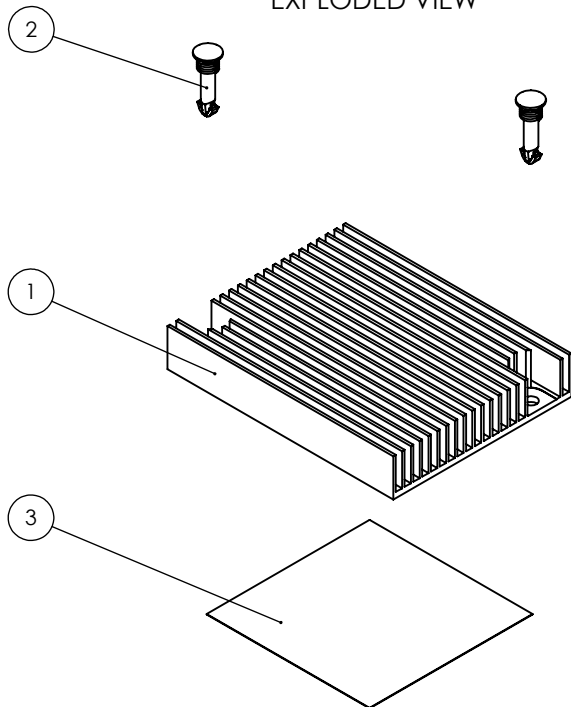


TABLE 1: COMPLETE PART NUMBER WITH OPTIONS

ROOT	PUSH PIN	THERMAL PAD
SZ00L	NONE	NONE OR PXXXX OR 3M8815 (FULL COVERAGE)
	B (BRASS PUSH PIN) - HS8097SP029	P5814 (LAIRD T-MATE 2905c PHASE CHANGE 45.72X45.72MM)
	P (PLASTIC PUSH PIN) - HS8143	
EXAMPLE PART NUMBER: SZ00L+B+P5814		

- NOTES:
 1. RECOMMENDED HOLE ON PCB:
 3.2MM FOR PLASTIC PUSH PIN,
 3.0MM FOR BRASS PUSH PIN.
 2. PART TO BE RoHS COMPLIANT.

ITEM NO.	PART NUMBER	DESCRIPTION	QTY.
1	PCI4010	63.37X50X10.5MM ALUMINUM PCI HEAT SINK	1
2	SEE TABLE 1	PUSH PIN	2
3	SEE TABLE 1	THERMAL PAD	1

MATERIAL	APPROVALS	DATE
FINISH	DRAWN MWILLOUGHBY	10/01/2018
UNLESS OTHERWISE SPECIFIED DIMENSIONS ARE IN MM TOLERANCES ARE: 1 PLACE DECIMALS: ± 0.25 2 PLACE DECIMALS: ± 0.10 ANGLES: ± 1°	CHECKED AGOWDA	10/02/2018
	MFG ENG	
	QUAL ENG.	
THIRD ANGLE PROJECTION	SHEET 1 OF 1	

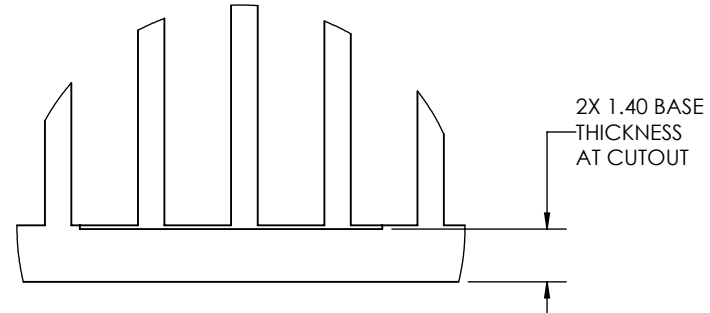
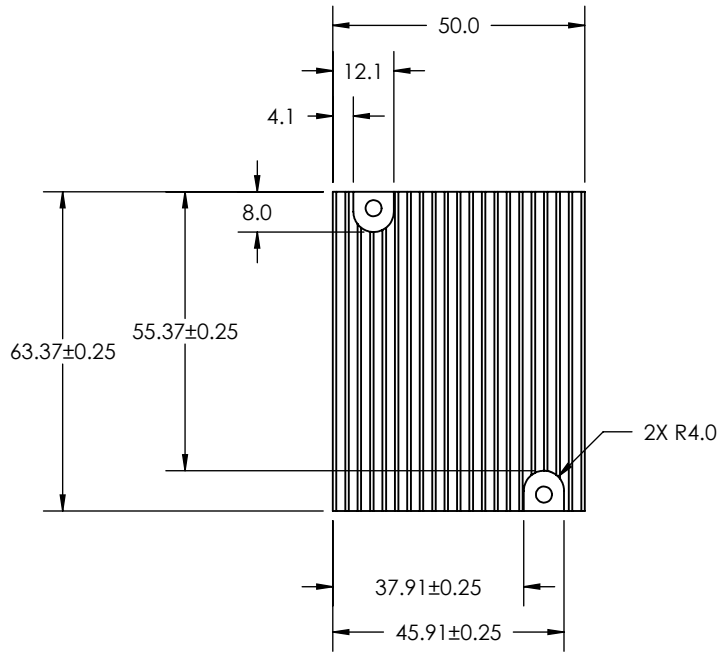
RADIAN HEATSINKS
 RADIAN THERMAL PRODUCTS, INC.
 2160 WALSH AVE
 SANTA CLARA, CA 95050

**63.37X50X10.5MM ALUMINUM
 PCI HEAT SINK ASSEMBLY**

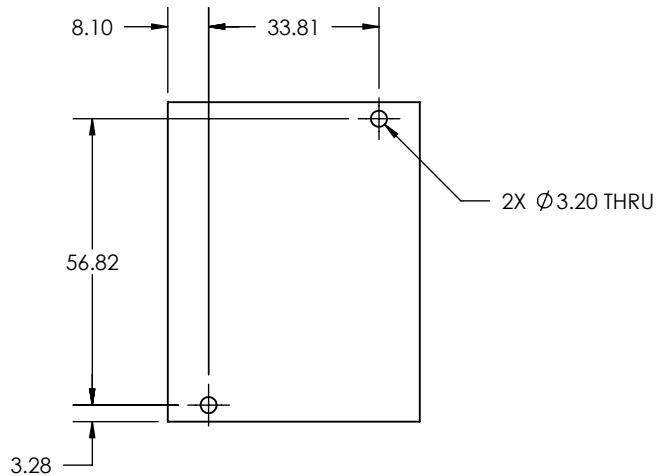
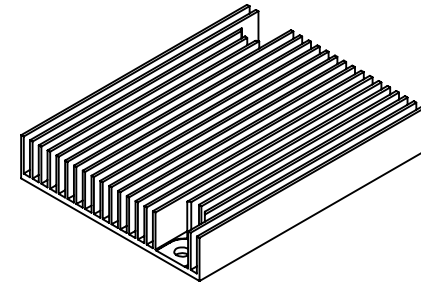
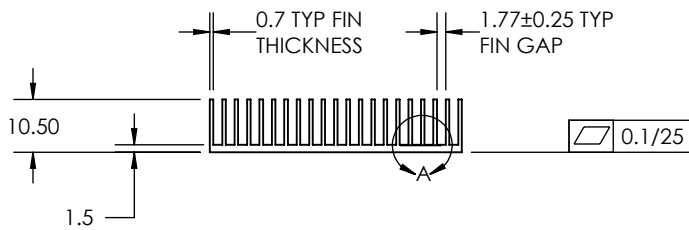
SIZE DWG. NO. **SZ00L** REV. **A**

THE INFORMATION CONTAINED IN THIS DRAWING IS THE SOLE PROPERTY OF RADIAN HEATSINKS AND ANY REPRODUCTION IN PART OR IN WHOLE IS STRICTLY PROHIBITED WITHOUT THE WRITTEN PERMISSION OF RADIAN HEATSINKS.


REV	DESCRIPTION	DRAWN	APPROVED	DATE
A	INITIAL RELEASE	MW	AG	10/02/2018



DETAIL A



- NOTES:
1. ANODIZE PER MIL-A-8625 TYII CL2 RADIAN BLUE.
 2. MAX. RADIUS 0.5 MM IS ALLOWED AT FIN TIPS AND ROOTS.
 3. MAX DRAFT ANGLE 0.5° IS ALLOWED
 4. PART TO BE FREE OF BURRS.
 5. PART TO BE RoHS COMPLIANT.

MATERIAL	A6061/A6063	APPROVALS	DATE	 RADIAN HEATSINKS RADIAN THERMAL PRODUCTS, INC. 2160 WALSH AVE SANTA CLARA, CA 95050
FINISH	SEE NOTE 1	DRAWN	10/01/2018	
UNLESS OTHERWISE SPECIFIED DIMENSIONS ARE IN MM TOLERANCES ARE: 1 PLACE DECIMALS: ± 0.25 2 PLACE DECIMALS: ± 0.10 ANGLES: ± 1°		CHECKED	10/02/2018	
		AGOWDA		
		MFG ENG		63.37X50X10.5 ALUMINUM HEAT SINK SIZE DWG. NO.
		QUAL ENG.		
THIRD ANGLE PROJECTION		SHEET 1 OF 1		REV. A